



## Real-Time & Continuous Spectrum Intelligence Platform

- ◎ **PERVASIVE & UBIQUITOUS**  
Continuous monitoring of all major 4G and 5G parameters through a region.
- ◎ **NETWORK INSIGHTS**  
Crystal clear views of all competitive or illegal RAN deployments including deployed technologies, where they are and when they were deployed.
- ◎ **NETWORK DYNAMICS**  
Real-time notification of changes in network deployments, signal quality and interference.
- ◎ **EFFORTLESS & COST EFFECTIVE**  
Data centric superscription service with zero or low capex.

### The SXM System | Spectrum Monitoring & Intelligence Revolution

Spectrum intelligence at your finger tips. Using a distributed network of powerful SXM nodes, combined with a cloud to store data with maximum cybersecurity and advanced analytics, SXM characterizes, optimizes and protects RF spectrum assets. SXM insights are delivered to your desktop, empowering you to eliminate threats and seize opportunities.



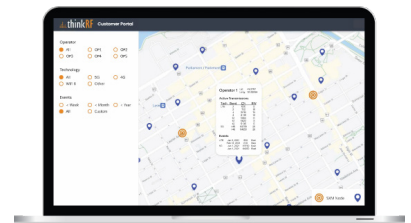
#### CONNECTION NODES



#### CLOUD



#### PREMISES | DATA ANALYTICS



## Critical SXM Features



COMPETITIVE INTELLIGENCE

Real-time notifications of what technologies your competitors are deploying where. Identify spectrum sharing, spectrum squatting and more.



OPTIMIZE NEW DEPLOYMENTS

Dynamically reconfigure your network in response to subscriber & competitive behaviours. Detect & locate spectrum interference.



INFORM SPECTRUM STRATEGIES

Identify spectrum squatting, accelerate spectrum clearance, inform spectrum auction strategies with competitive spectrum usage.



REDUCE RF DRIVE TESTING

Receive data that would otherwise require 100's of continuously operating RF drive test vehicles.



IDENTIFY UNLICENSED ACTIVITY

Evidence based reporting of transmitters exceeding licensed power levels. Identify, locate and monitor unlicensed transmitters.

## Spectrum Intelligence Options

|                                     | SXM | Crowd Source | RF Drive Test |
|-------------------------------------|-----|--------------|---------------|
| Real time reporting                 | ✓   | ✗            | ✗             |
| Continuous monitoring               | ✓   | ✓            | ✗             |
| Enables proactive decisions         | ✓   | ✗            | ✗             |
| Characterizes competitive RANs      | ✓   | Partial      | ✓             |
| Reports changes in competitive RANs | ✓   | ✗            | ✗             |
| Detects unlicensed RANs             | ✓   | ✗            | ✗             |
| RAN quality and loading monitoring  | ✓   | ✗            | ✓             |
| Interference detection              | ✓   | ✗            | ✓             |
| Supports unlicensed & private bands | ✓   | ✗            | ✗             |
| Identifies spectrum sharing         | ✓   | ✗            | ✗             |
| Identifies spectrum squatting       | ✓   | ✗            | ✗             |
| Integration to existing data banks  | ✓   | ✓            | ✗             |



CONTACT US FOR A  
FREE DEMO TODAY!

sxm@thinkrf.com

**thinkRF**<sup>TM</sup>  
monitor. detect. analyze.